

# GLOBAL PROJECTS

**BUILD SAFELY  
USING OUR FORMWORK.**

[www.faresinbuilding.com](http://www.faresinbuilding.com)





# INDEX

- 4 SOPA SQUARE CANADA
- 10 EPCOR TOWER CANADA
- 16 BARWA COMMERCIAL AVENUE QATAR
- 22 BARWA FINANCIAL DISTRICT QATAR
- 28 CAPE TOWN STADIUM SOUTH AFRICA
- 34 SOCCER CITY STADIUM SOUTH AFRICA
- 40 VICTORIA SQUARE APARTMENTS AUSTRALIA
- 46 HYUNDAI AUSTRALIA HEADQUARTER AUSTRALIA
- 52 COMMERCIAL OFFICE TOWER AUSTRALIA
- 56 NORTH SOUTH RAILWAY SAUDI ARABIA
- 62 ARENA LVIV UKRAINA
- 68 “QUADRILATERO” MOTORWAY CONNECTION A16-E45 ITALY
- 74 METRO TUNNEL ITALY
- 80 MO.SE ITALY
- 86 S. PAOLO CHURCH ITALY
- 92 A3 SALERNO-REGGIO CALABRIA HIGHWAY ITALY
- 98 PALACONGRESSI RIMINI ITALY
- 104 ARENA PALESTRA ITALIA BRASILE
- 110 MULTIFUNCTIONAL RESIDENTIAL COMPLEX RUSSIA
- 114 BIOGAS PLANT ITALY



# SOPA SQUARE

KELOWNA BC  
CANADA

The project includes 87 residential suites, 50,000 sqft of retail and 20,000 sqft of office space located on the 3000 block of Pandosy Street, Kelowna BC, Canada.

PRODUCTS

ALUFORT  
POKER PILLARS

SHAFT LIFT  
WORKING PLATFORM

ACCOUNT

CABETE CONSTRUCTION

PROJECT VALUE

109 MILLION CANADIAN DOLLARS

YEAR

2010-IN CONSTRUCTION

# SOPA SQUARE

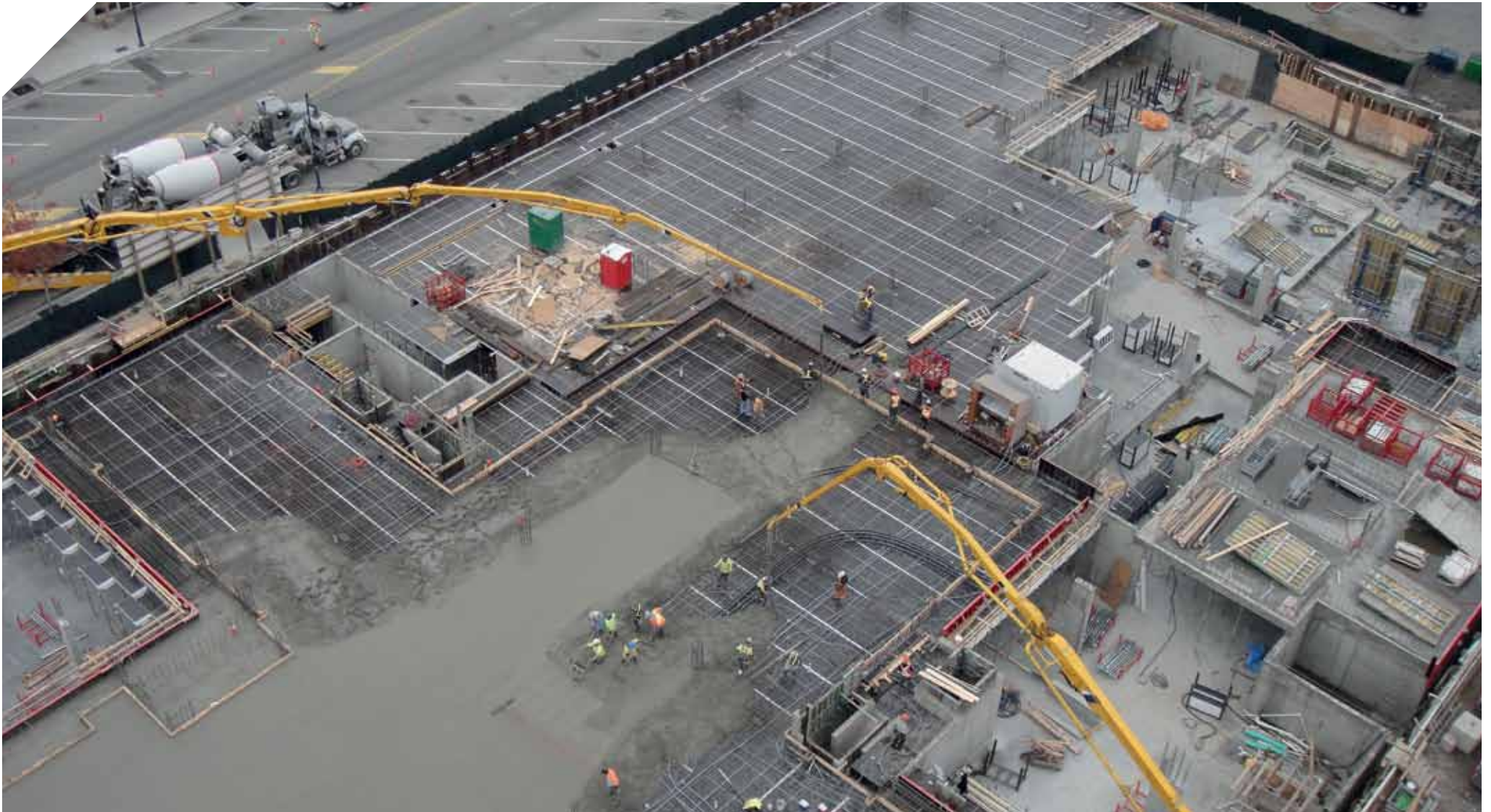








# SOPA SQUARE









# EPCOR TOWER

EDMONTON  
AL CANADA

A 29-storey office tower in Edmonton downtown, 137 metres high, 57000 m<sup>2</sup> of floor area.  
The first new office tower in over a decade.

PRODUCTS

**MODULO S120**

PROJECT VALUE

**250 MILLION CANADIAN DOLLARS**

ACCOUNT

**PAGNOTTA INDUSTRIES**

YEAR

**2008-2011**



# EPCOR TOWER









# EPCOR TOWER









# BARWA COMMERCIAL AVENUE

DOHA  
QATAR

The project of 1,000,000 square metres and eight-and a half kilometres in length, comprising five distinct yet interconnected zones, will offer 600 retail spaces and 850 residential units and offices.

PRODUCTS

ALUFORT

PROJECT VALUE

1.3 BILLION EURO

ACCOUNT

HOCTIEF AG

YEAR

2008-IN CONSTRUCTION

# BARWA COMMERCIAL AVENUE









# BARWA COMMERCIAL AVENUE









# BARWA FINANCIAL DISTRICT

DOHA  
QATAR

The Financial District is an ensemble complex, of ten buildings averaging 20 to 25 floors per structure and will be built on a land mass of 71 600 m<sup>2</sup> and floor area of 700 000 m<sup>2</sup>.

PRODUCTS

ALUFORT

PROJECT VALUE

950 MILLION U.S. DOLLARS

ACCOUNT

BOYGUES CONSTRUCTION

YEAR

2009-IN CONSTRUCTION



# BARWA FINANCIAL DISTRICT



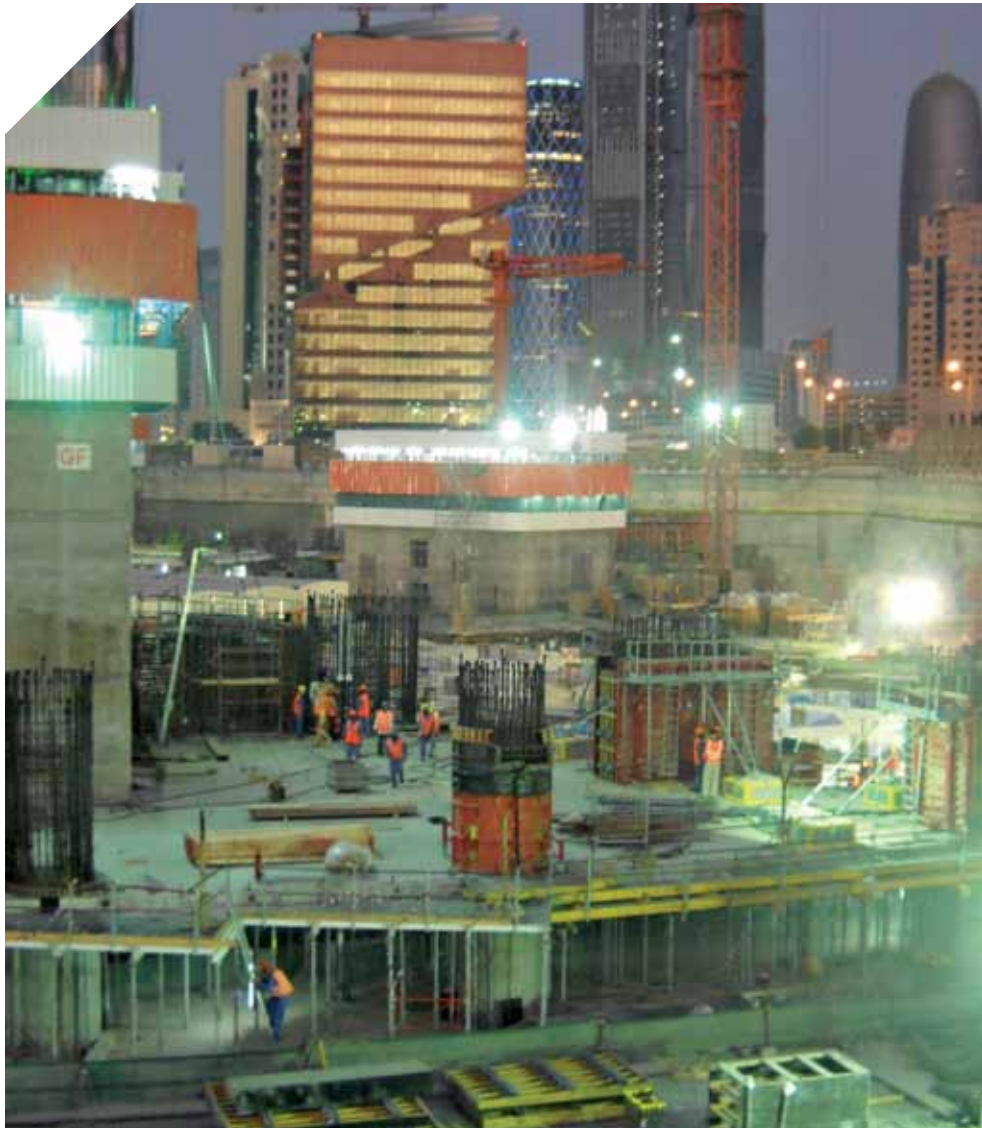




# BARWA FINANCIAL DISTRICT











# CAPE TOWN STADIUM

CAPE TOWN  
SOUTH AFRICA

A newly built stadium used for the 2010 FIFA World Cup. The stadium has a seating capacity of 64,100.

PRODUCTS

**ALU-UP PROPS**

PROJECT VALUE

**600 MILLION U.S. DOLLARS**

ACCOUNT

**FORM-SCAFF**

YEAR

**2007-2010**

# CAPE TOWN STADIUM









# CAPE TOWN STADIUM











# SOCCER CITY STADIUM

JOHANNESBURG  
SOUTH AFRICA

Soccer City, known as FNB Stadium for commercial purposes, was designed as the main stadium for the World Cup. It became the largest stadium in Africa with a seating capacity of 94,736.

PRODUCTS

**ALU-UP PROPS**

PROJECT VALUE

**440 MILLION U.S. DOLLARS**

ACCOUNT

**FORM-SCAFF**

YEAR

**2007-2009**

# SOCCER CITY STADIUM









# SOCCER CITY STADIUM











# VICTORIA SQUARE APARTMENTS

SYDNEY  
AUSTRALIA

Victoria Square is a development of new apartments in Sydney's inner city. Just four kilometres from the CBD, Zetland is fast becoming one of Sydney's most vibrant communities with a modern lifestyle.

## PRODUCTS

ALUFORT

MODULO AL

ALU-UP PROPS

S120

## PROJECT VALUE

103 MILLION AUSTRALIAN DOLLARS

## ACCOUNT

BETAFORM PTY LTD

## YEAR

2011-2012

# VICTORIA SQUARE APARTMENTS









# VICTORIA SQUARE APARTMENTS











# HYUNDAI AUSTRALIA HEADQUARTERS

SYDNEY  
AUSTRALIA

Hyundai Motor Company Australia new headquarters and training centre in Sydney will accommodate approximately 250 permanent HMCA employees in 15000 m<sup>2</sup> of premium office space.

PRODUCTS

ALUFORT

ALU-UP PROPS

PROJECT VALUE

54 MILLION AUSTRALIAN DOLLARS

ACCOUNT

FORMTEC FORMWORK CONTRACTORS

YEAR

2008



# HYUNDAI AUSTRALIA HEADQUARTER









# HYUNDAI AUSTRALIA HEARDOUQUARTER









# COMMERCIAL OFFICE TOWER

MACQUARIE PARK,  
NSW, AUSTRALIA

Office building consisting of 40,000 m2 of formwork over 8 levels, providing premium office space in the Macquarie Park Business District of Sydney.

PRODUCTS

ALUFORT, ALU-UP PROPS

PROJECT VALUE

45 MILLION AUSTRALIAN DOLLARS

ACCOUNT

FORMTEC FORMWORK CONTRACTORS

YEAR

2008



# COMMERCIAL OFFICE TOWER









# NORTH SOUTH RAILWAY

## SAUDI ARABIA

Construction of a railway overbridge on the 2,400 kilometre long railway project in Saudi Arabia, intended to connect Al-Haditha with the port city Ras Al-Khair.

PRODUCTS

MODULO S100

CLIMBING BRACKETS

PROJECT VALUE

2.8 BILLION U.S. DOLLARS

ACCOUNT

ARCAN CONTRACTING

YEAR

2009-IN CONSTRUCTION



# NORTH SOUTH RAILWAY









# NORTH SOUTH RAILWAY









# ARENA LVIV

LVIV  
UKRAINE

Arena Lviv is a football-only stadium in Lviv, Ukraine. It was one of the eight UEFA Euro 2012 venues, where it hosted three of the group-stage games. According to the official project, the stadium has an all-seated capacity of 34,915.

PRODUCTS

MODULO S100

ALU-UP PROPS

SCAFFOLDING SYSTEM

PROJECT VALUE

211 MILLION EURO

ACCOUNT

AZOVINTEX

YEAR

2008-2011



# ARENA LVIV









# ARENA LVIV









# QUADRILATERO

## MOTORWAY CONNECTION A16-E45

PESCARA  
ITALY

Motorway connection A16-E45, 160 km length.

PRODUCTS

MODULO S100

TROLLEY F1

TAVOLI

PROJECT VALUE

2 BILLION EURO

ACCOUNT

STRABAG

YEAR

2008-IN CONSTRUCTION



# QUADRILATERO







# QUADRILATERO











# METRO TUNNEL

CATANIA  
ITALY

The tunnel of 3.2 km will include four subway stations in Catania, Italy.

PRODUCTS

**TUNNEL FORMWORK**

PROJECT VALUE

**100 MILLION EURO**

ACCOUNT

**SI.GEN.CO**

YEAR

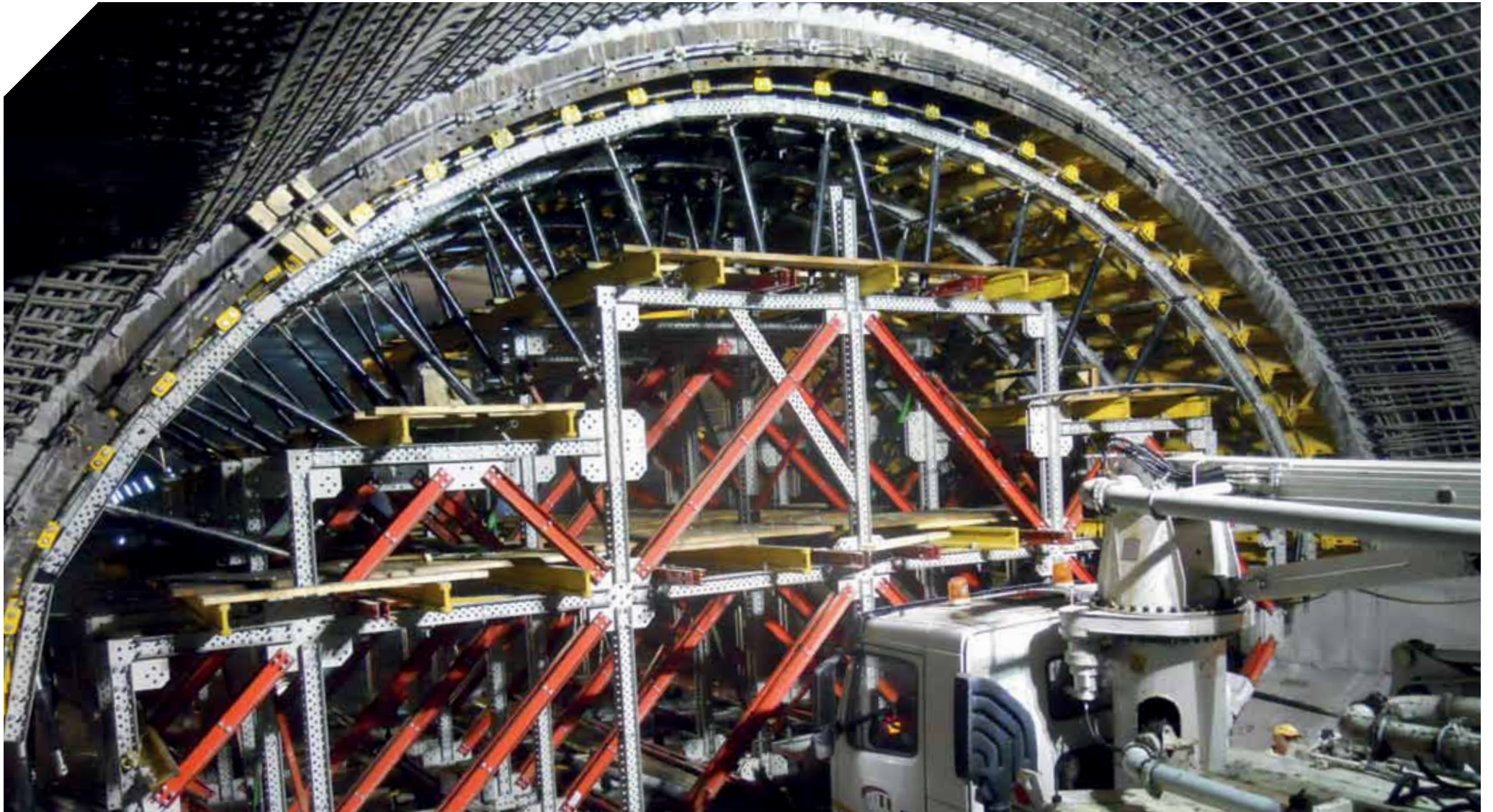
**2009-IN CONSTRUCTION**



# METRO TUNNEL









# METRO TUNNEL











# MO.SE

VENEZIA  
ITALY

One of the most important projects in Europe, is intended to protect the city of Venice from floods. The project is an integrated defence system consisting of rows of mobile gates able to isolate the Venetian Lagoon from the Adriatic Sea when the tide reaches above an established level (110 cm) and up to a maximum of 3m.

PRODUCTS

**MODUL SCAFFOLDING SYSTEM**

PROJECT VALUE

**4.6 BILLION EURO**

ACCOUNT

**GRANDI LAVORI FINCOSIT SPA**

YEAR

**2003-2014**



# MO.SE









# MO.SE









# S. PAOLO CHURCH

FOLIGNO  
ITALY

Church with a smooth finished concrete surface designed by the famous Italian architect Fuksas.

PRODUCTS

**MODULO S100**

PROJECT VALUE

**€3 MILLION EURO**

ACCOUNT

**EDILTECNICA S.p.A.**

YEAR

**2010-2011**



# S. PAOLO CHURCH







# S. PAOLO CHURCH









# A3

## SALERNO-REGGIO CALABRIA HIGHWAY

SAN DEMETRIO  
CORONE (CS) ITALY

Construction of piers and dosserets of a overbridge on the A3 Salerno-Reggio Calabria highway.

PRODUCTS

**CUSTOM DESIGNED FORMWORK**

PROJECT VALUE

**26 MILLION EURO**

ACCOUNT

**SAN DEMETRIO SCARL**

YEAR

**2010-IN CONSTRUCTION**



# A3







# A3









# RIMINI PALACONGRESSI

RIMINI  
ITALY

The Palacongressi occupies an area of 38000 m<sup>2</sup>. The structure is made of two main parts: the first one comprises of a big hallway of 4000 m<sup>2</sup> organised events; the second is a shell-shaped auditorium with 1600 seats.

PRODUCTS

ALUFORT

POKER PILLARS

ONE SIDE WALL SYSTEM

MODULO S100

ACCOUNT

COFATECH SERVIZI S.p.A.

PROJECT VALUE

111 MILLION EURO

YEAR

2007 - 2011



# RIMINI PALACONGRESSI









# RIMINI PALACONGRESSI











# ARENA PALESTRA ITALIA

SÃO PAULO  
BRAZIL

Arena Palestra Itália, located in São Paulo, Brazil, will be a modern multi-use arena and the home of Sociedade Esportiva Palmeiras. It will seat 45,000 people for soccer games and up to 60,000 people for other events.

PRODUCTS

MODULO S100

CLIMBING BRACKET

PROJECT VALUE

170 MILLION EURO

ACCOUNT

WTORRE

YEAR

2011– IN CONSTRUCTION



# ARENA PALESTRA ITALIA









# ARENA PALESTRA ITALIA











# MULTIFUNCTIONAL RESIDENTIAL COMPLEX

MOSCOW  
RUSSIA

The Complex contains:

3 apartment buildings of different heights: cylindrical building «C», 20 stories; square building «B», 30 stories; rectangular building «A» - 40 stories; 4-storey shopping mall; underground parking for 695 car spaces.

PRODUCTS

MODULO S120

GOLIATH

ACCOUNT

LLC STROYARSENAL

YEAR

2009



# MULTIFUNCTIONAL RESIDENTIAL COMPLEX











# BIOGAS PLANT

## CANDIANA (PD) ITALY

Cogeneration power plant of biogas produced by the fermentation of manure.

Plant's nominal electric power: 360kW, Volume: Pre-storage tank D = 7m H = 4m; Digester D = 22.6 m H = 8m; Final storage tank D = 36.6m H = 6m, Energy capacity of 2640 MWh per year

PRODUCTS  
**BIOGAS SYSTEM**

YEAR  
**2012**

PROJECT VALUE  
**3,5 MILLION EURO**



# BIOGAS PLANT











## **HEADQUARTERS**

### **Breganze**

FARESIN BUILDING S.P.A.  
Via della Meccanica, 1 - 36042 Breganze (VI) Italia  
Phone +39.0445.300300 - Fax +39.0445.874748  
info@faresinbuilding.com

## **BRANCH**

### **Roma**

FARESIN BUILDING S.P.A.  
Via Stefano Protonotaro, 33 - 00131 Roma  
Phone +39.06.41400017 - Fax +39.06.41469371  
faresinroma@faresinbuilding.com

## **REPRESENTATIVE OFFICES**

FARESIN BUILDING SPA  
GERMANY BRANCH  
Rudolf-Diesel Straße 5a - D, 85221 Dachau

### **Germany**

Phone +49 8131 2716945  
Fax +49 8131 2716944

GERMANY  
info.germany@faresinbuilding.com  
AUSTRIA  
info.austria@faresinbuilding.com  
SWITZERLAND  
info.swiss@faresinbuilding.com

### **U.S.A.**

FARESIN BUILDING USA, Inc.  
1800 West Loop South, Suite 1120  
77027 Houston, Texas - USA  
info@faresinbuilding.us

## **SUBSIDIARIES**

### **Italy**

FARESIN SERVIZI PER L'EDILIZIA SRL  
Via Michelangelo Buonarroti, 12  
20040 Cambiago (MI)  
Phone +39.02.9506205 - Fax. +39.02.95345164  
info@faresinserv.com

### **Australia**

FARESIN AUSTRALIA PTY LIMITED  
Suite 1, Level 1, 49-55 Lakemba Street  
Belmore NSW 2192 - Australia  
Phone +61 2 9784 3999 - Fax. +61 2 97595551  
info@faresinaustralia.com.au

### **Romania**

SC FARESIN ROMANIA SRL  
Str. Morii n. 6 Mogosoaia  
077135 Judetul Ilfov - Romania  
Phone 0040 21 3514401 - Fax 0040 21 3514402  
office@faresinromania.ro

### **Russia**

#### **ST. PETERSBURG**

JSCO FARESIN SPB  
Basseynaya Str. 73/1  
196211 St. Petersburg - Russia  
Phone 007 812 33797144 - Fax 007 812 3797242  
petersburg@faresin.ru

#### **MOSCOW**

OOO FARESIN RUS  
Granatnyi per.D2/9  
123001 Mosca - Russia  
Phone - 007 495 225 5702 - Fax 007 495 697 4234  
moscow@faresinrus.ru



**BUILD SAFELY  
USING OUR FORMWORK.**

[www.faresinbuilding.com](http://www.faresinbuilding.com)

